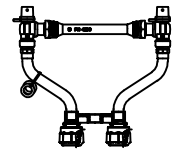


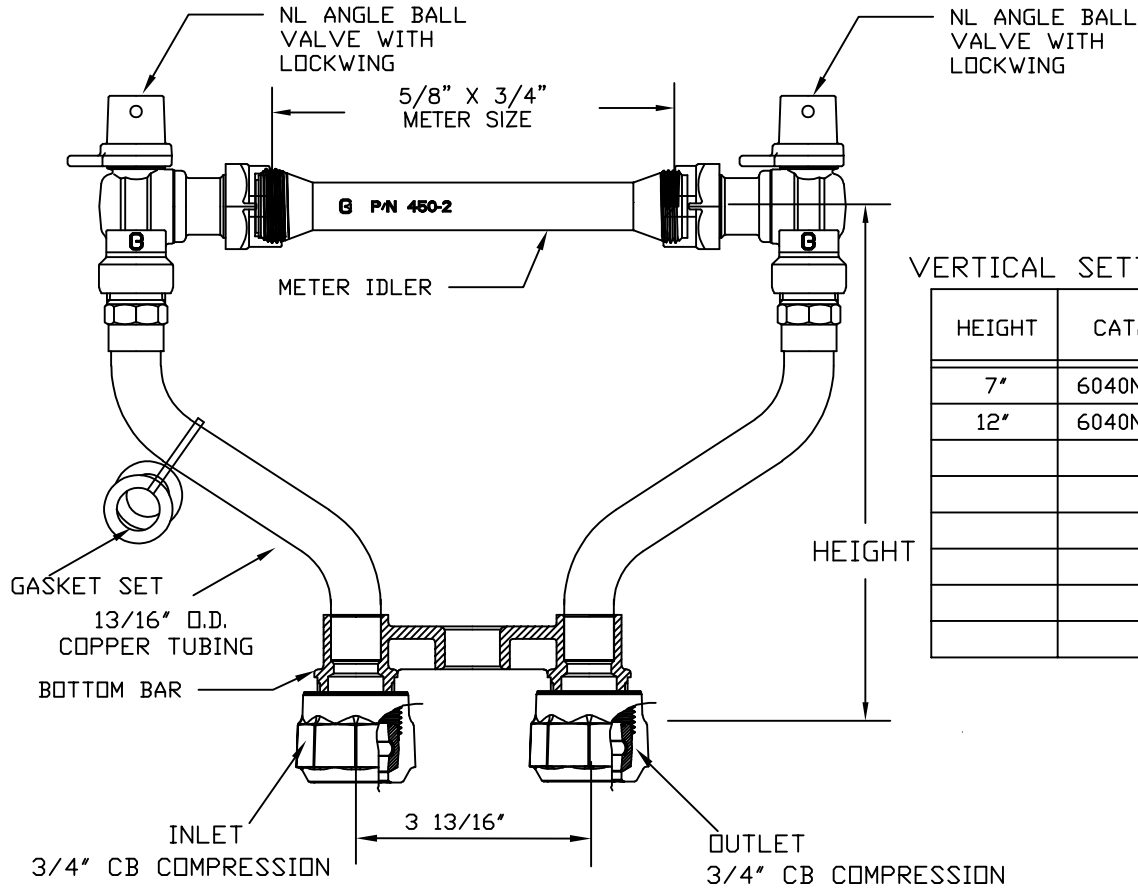
SUBMITTAL INFORMATION



VERTICAL SETTER 6040NL-2__H3H3-VV

3/4" REDUCED PORT METER BALL VALVE BY 3/4" REDUCED PORT METER BALL VALVE

SERVICE CONNECTION: 3/4" CB COMPRESSION INLET AND OUTLET



VERTICAL SETTER CATALOG NUMBERS

HEIGHT	CATALOG NUMBER	APPROX. WT. LBS.
7"	6040NL-207H3H3-VV	
12"	6040NL-212H3H3-VV	

FEATURES:

- CONFORMS TO ANSI/NSF 61-8
- CONFORMS TO ANSI/NSF 372 (COMPLIANT WITH US Safe Drinking Water Act. PL 111-380)
- ALL COMPONENTS CONFORM TO AWWA C800-05 (ASTM B-584, UNS NO C89833 FOR BRASS PARTS IN CONTACT WITH POTABLE WATER, AND ASTM B-62 AND B-584, UNS NO C83600 FOR ALL OTHER BRASS PARTS).
- METER SWIVEL SADDLE NUTS HOLD THE METER IN PLACE FOR TIGHTENING.
- EPDM METER GASKETS PROVIDED
- ANGLE VALVE HAS PADLOCK WINGS FOR LOCKING VALVE IN CLOSED POSITION.
- 13/16" OD COPPER TUBE RISERS.
- ASSEMBLED WITH LEAD-FREE SOLDER.
- VERTICAL BRACING EYE IS STANDARD.
- CONSTRUCTED WITH TYPE K COPPER TUBING, ALLOY C12000 MANUFACTURED TO ASTM B88.
- TIE BAR IS STANDARD FOR 18" AND TALLER METER SETTER HEIGHTS.
- 180 DEG. FAHRENHEIT MAXIMUM CONSTANT TEMPERATURE.
- 175 PSI MAXIMUM WORKING PRESSURE.

Cambridge Brass considers the information in this submittal form to be correct at the time of publication. Item and option availability, including specifications, are subject to change without notice.

Cambridge Brass
 P.O. Box 249, 140 Orion Place
 Cambridge, Ontario
 Canada N1R 5V1
 Tel: (519) 621-5520
 Fax: (519) 621-8674
<http://www.cambridgebrass.com>



MARCH 2023

SUBMITTED BY: