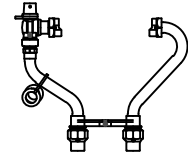


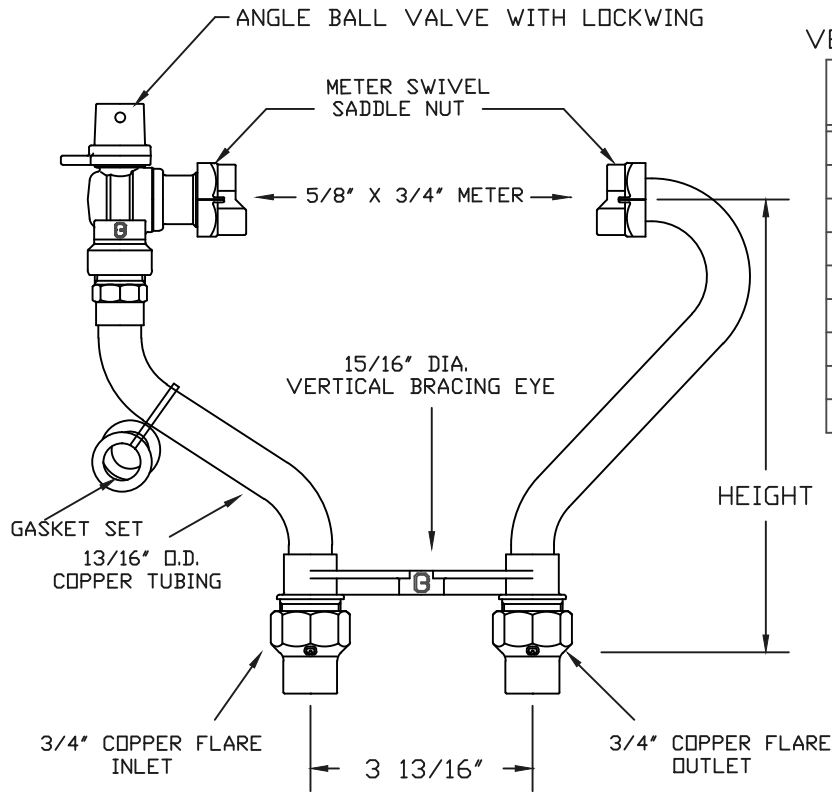
SUBMITTAL INFORMATION

VERTICAL SETTER 6040NL-2__C3C3-V0



5/8" x 3/4" REDUCED PORT METER BALL VALVE INLET BY METER SWIVEL NUT OUTLET

SERVICE CONNECTION: 3/4" COPPER FLARE INLET AND OUTLET



VERTICAL SETTER CATALOG NUMBERS

HEIGHT	CATALOG NUMBER	APPROX. WT. LBS.
7"	6040NL-207C3C3-V0	
9"	6040NL-209C3C3-V0	
12"	6040NL-212C3C3-V0	
15"	6040NL-215C3C3-V0	
18"	6040NL-218C3C3-V0	
21"	6040NL-221C3C3-V0	
24"	6040NL-224C3C3-V0	
27"	6040NL-227C3C3-V0	
30"	6040NL-230C3C3-V0	

FEATURES:

- ALL COMPONENTS CONFORM TO AWWA C800-05 (ASTM B-584, UNS NO C89833 FOR BRASS PARTS IN CONTACT WITH POTABLE WATER, AND ASTM B-62 AND B-584, UNS NO C83600 FOR ALL OTHER BRASS PARTS).
- METER SWIVEL SADDLE NUTS HOLD THE METER IN PLACE FOR TIGHTENING.
- TIE BAR IS STANDARD FOR 18" AND TALLER METER SETTER HEIGHTS.
- 13/16" OD COPPER TUBE RISERS.
- ASSEMBLED WITH LEAD-FREE SOLDER.
- VERTICAL BRACING EYE IS STANDARD.
- CONSTRUCTED WITH TYPE K COPPER TUBING, ALLOY C1200 MANUFACTURED TO ASTM B88.
- NITRILE METER GASKETS PROVIDED
- ANGLE VALVE HAS PADLOCK WINGS FOR LOCKING VALVE IN CLOSED POSITION.
- CONFORMS TO ANSI/NSF 372 (COMPLIANT WITH US Safe Drinking Water Act, PL 111-380)
- 300 PSI WORKING PRESSURE

Cambridge Brass considers the information in this submittal form to be correct at the time of publication. Item and option availability, including specifications, are subject to change without notice.

Cambridge Brass
 P.O. Box 249, 140 Orion Place
 Cambridge, Ontario
 Canada N1R 5V1
 Tel: (519) 621-5520
 Fax: (519) 621-8674
<http://www.cambridgebrass.com>



REV. B - MAY 2014

SUBMITTED BY: