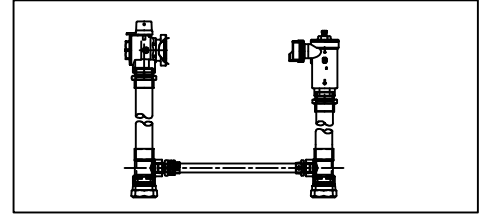


SUBMITTAL INFORMATION

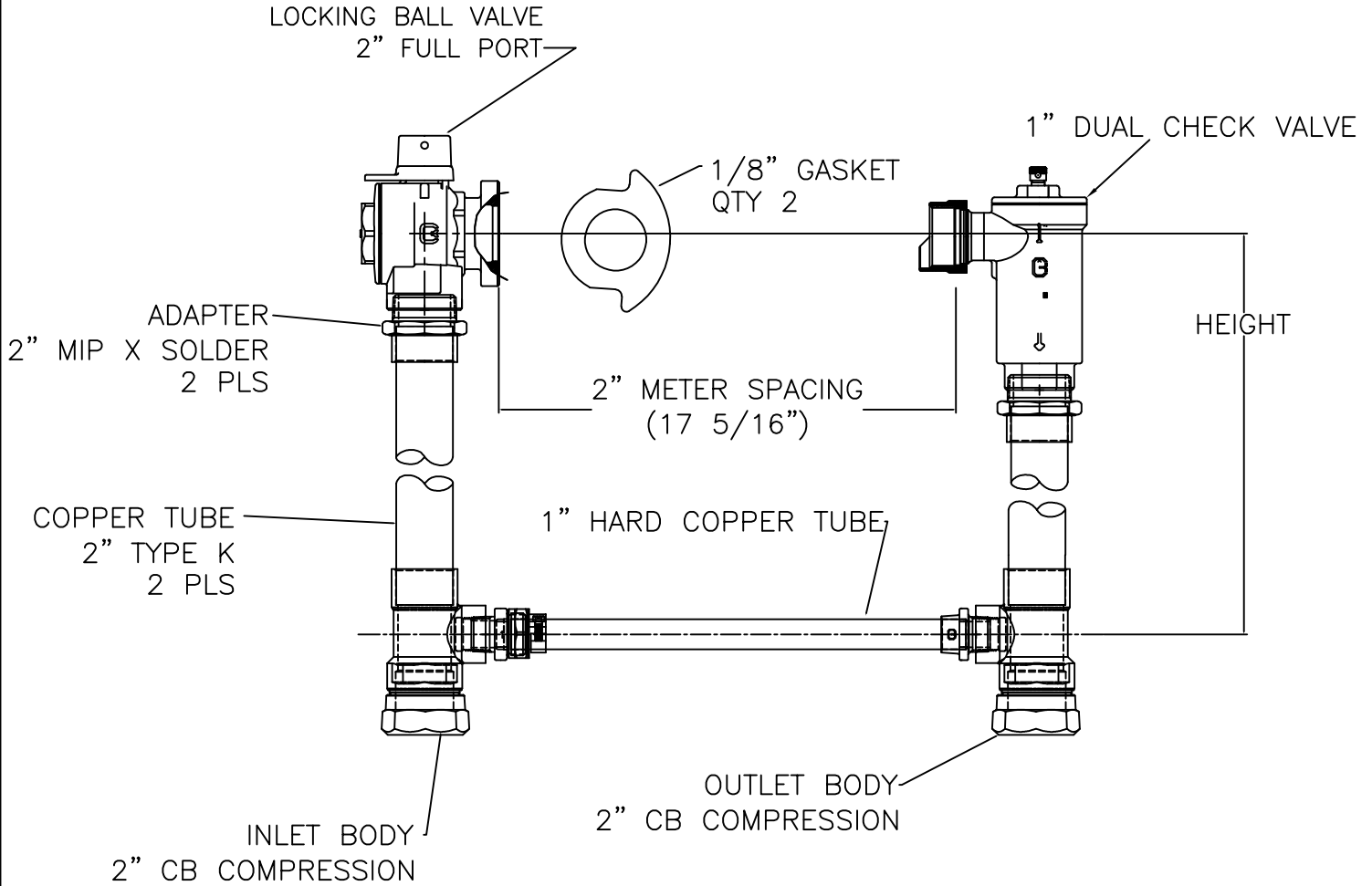
VERTICAL SETTER
6040NL-7__H7H7-UQ



NO LEAD ANGLE BALL VALVE X DUAL CHECK VALVE (AT 2" METER)

2" CB COMPRESSION INLET AND OUTLET

NO BYPASS



- FEATURES:**
- ALL COMPONENTS CONFORM TO AWWA C800-05 (ASTM B-584, UNS NO C89833 FOR BRASS PARTS IN CONTACT WITH POTABLE WATER, AND ASTM B-62 AND B-584, UNS NO C83600 FOR ALL OTHER BRASS PARTS).
 - CONFORMS TO ANSI/NSF 372 (COMPLIANT WITH US Safe Drinking Water Act, PL 111-380)
 - 175 PSI WORKING PRESSURE
 - ASSEMBLED WITH LEAD-FREE SOLDER.
 - CONSTRUCTED WITH TYPE K COPPER TUBING (ALLOY C1200 MANUFACTURED TO ASTM B88)
 - NITRILE METER GASKETS PROVIDED
 - ANGLE VALVE HAS PADLOCK WINGS FOR LOCKING VALVE IN CLOSED POSITION.
 - FACTORY TESTED AT 90 PSI AIR PRESSURE UNDER WATER.

HEIGHT	CATALOG NUMBER	APPROX. WT. LBS.
9'		
12'		
15'		
18'		
21'		
24'	6040NL-724H7H7-UQ	
27'		

Cambridge Brass considers the information in this submittal form to be correct at the time of publication. Item and option availability, including specifications, are subject to change without notice.

Cambridge Brass
P.O. Box 249, 140 Orion Place
Cambridge, Ontario
Canada N1R 5V1
Tel: (519) 621-5520
Fax: (519) 621-8674
<http://www.cambridgebrass.com>



REV. A - AUG 2014

SUBMITTED BY: