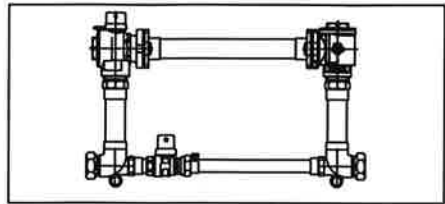


# SUBMITTAL INFORMATION

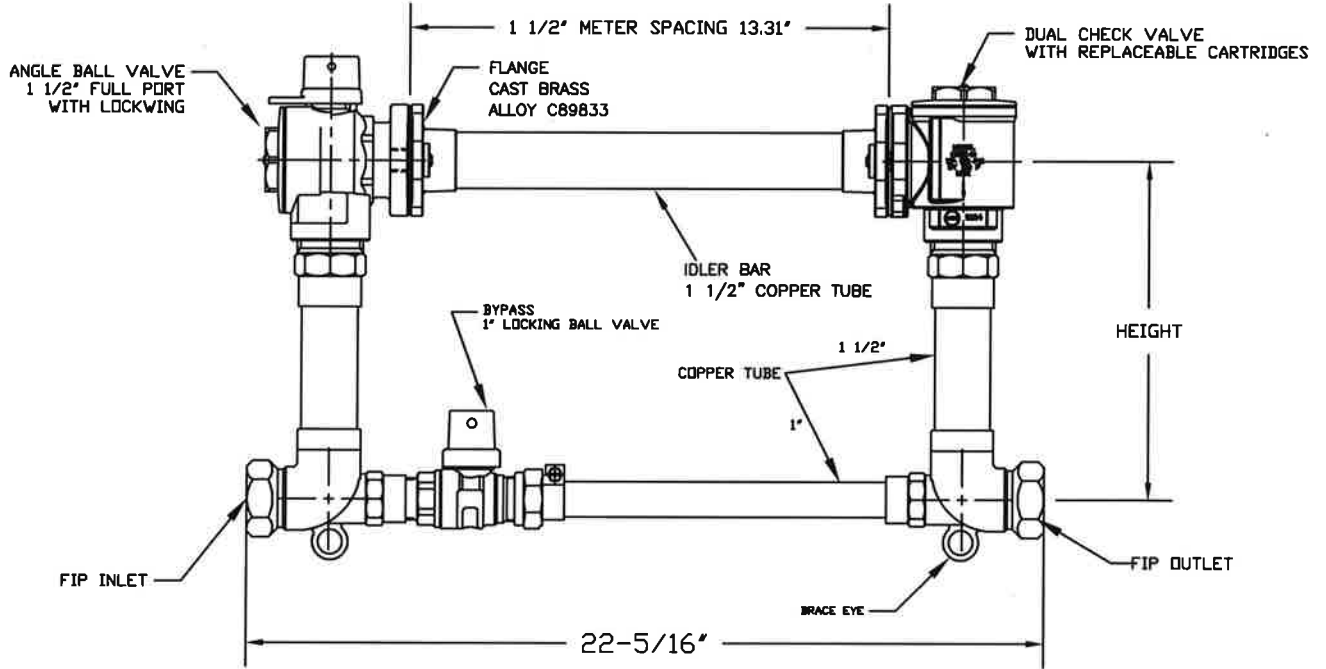
HORIZONTAL SETTER 6020NL-6\_\_F6F6-UQBZ



NO LEAD ANGLE BALL VALVE BY ANGLE CHECK VALVE AT 1 1/2" METER

1 1/2" FEMALE IRON PIPE THREAD INLET AND OUTLET

WITH 1" BYPASS w/450NL-6 METAL IDLER



**FEATURES:**

- MANUFACTURED IN COMPLIANCE WITH AWWA STANDARD C800 (ASTM B-584, UNS NO C89833 FOR BRASS PARTS IN CONTACT WITH POTABLE WATER, AND ASTM B-62 AND ASTM B-584, UNS NO C83600 FOR ALL OTHER BRASS PARTS)
- CONFORMS TO ANSI/NSF 61-8
- CONFORMS TO ANSI/NSF 372 (COMPLIANT WITH US Safe Drinking Water Act. PL 111-380)
- ASSEMBLED WITH LEAD-FREE SOLDER.
- BRACING EYE IS STANDARD.
- POSITIONS THE METER DIRECTLY ABOVE THE CENTERLINE OF THE SERVICE.
- FURNISHED WITH TWO RUBBER GASKETS FOR METER NUTS/IDLER
- CONSTRUCTED WITH TYPE K COPPER TUBING, ALLOY C12000 MANUFACTURED TO ASTM B88.
- ANGLE VALVE HAS PADLOCK WINGS FOR LOCKING VALVE IN CLOSED POSITION.
- FACTORY TESTED AT 90 PSI AIR PRESSURE UNDER WATER.
- 175 PSI WORKING PRESSURE
- 180 DEG. FAHRENHEIT MAXIMUM CONSTANT TEMPERATURE.
- CHECK VALVE IS ASSE 1024 APPROVED

HEIGHT	CATALOG NUMBER	APPROX. WT. LBS.
12"	6020NL-612F6F6-UQBZ	
15"	6020NL-615F6F6-UQBZ	
18"	6020NL-618F6F6-UQBZ	
21"	6020NL-621F6F6-UQBZ	
24"	6020NL-624F6F6-UQBZ	
27"	6020NL-627F6F6-UQBZ	

Cambridge Brass considers the information in this submittal form to be correct at the time of publication. Item and option availability, including specifications, are subject to change without notice.

Cambridge Brass  
 P.O. Box 249, 140 Orion Place  
 Cambridge, Ontario  
 Canada N1R 5V1  
 Tel: (519) 621-5520  
 Fax: (519) 621-8674  
<http://www.cambridgebrass.com>



SUBMITTED BY: