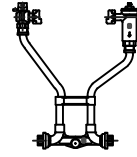


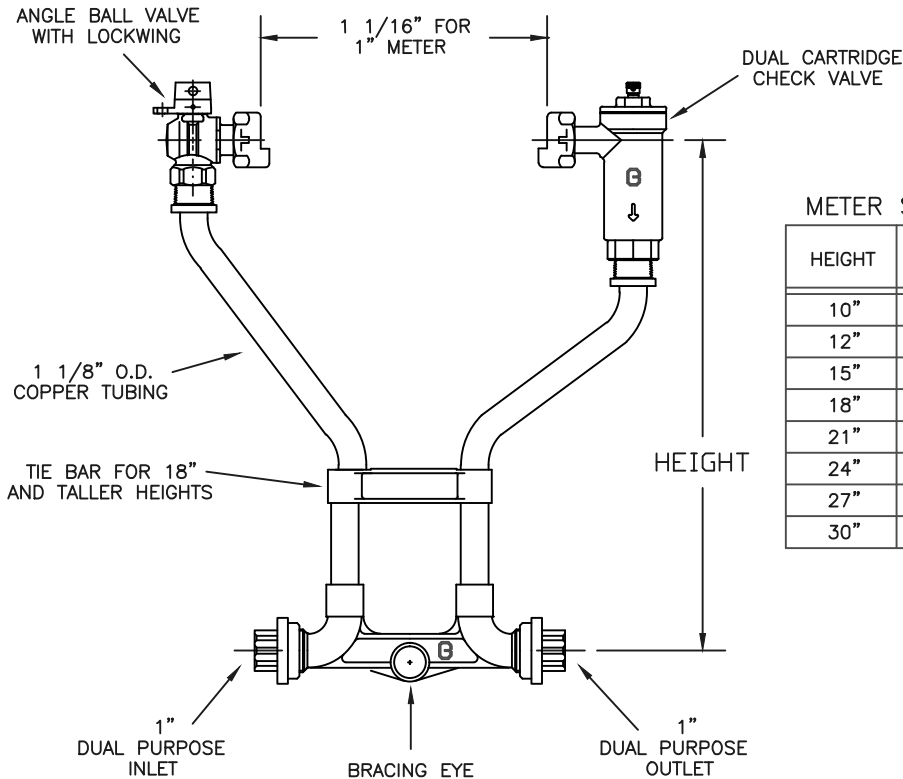
SUBMITTAL INFORMATION

METER SETTER 6020NL-4__D4D4-VQ



1" REDUCED PORT METER BALL VALVE INLET AND DUAL CARTRIDGE CHECK VALVE OUTLET

DUAL PURPOSE INLET AND OUTLET CONNECTIONS TO WATER SERVICE



METER SETTER CATALOG NUMBERS

HEIGHT	CATALOG NUMBER	APPROX. WT. LBS.
10"	6020NL-410D4D4-VQ	
12"	6020NL-412D4D4-VQ	
15"	6020NL-415D4D4-VQ	
18"	6020NL-418D4D4-VQ	
21"	6020NL-421D4D4-VQ	
24"	6020NL-424D4D4-VQ	
27"	6020NL-427D4D4-VQ	
30"	6020NL-430D4D4-VQ	

FEATURES

- MANUFACTURED IN COMPLIANCE WITH AWWA STANDARD C800. (ASTM B-62 AND B-584, UNS NO C83600-85-5-5-5).
- SADDLE NUTS HOLD THE METER IN PLACE FOR TIGHTENING.
- TIE BAR IS STANDARD FOR 18" AND TALLER METER SETTER HEIGHTS.
- 1 1/8" O.D. COPPER RISERS PROVIDE MORE FLOW CAPACITY.
- ASSEMBLED WITH LEAD-FREE SOLDER.
- BRACING EYE IS STANDARD.
- CONSTRUCTED WITH TYPE K COPPER TUBING, ALLOY C1200 MANUFACTURED TO ASTM B88.
- POSITIONS THE METER DIRECTLY ABOVE THE CENTERLINE OF THE SERVICE.
- FURNISHED WITH RUBBER METER GASKETS.
- ANGLE VALVE HAS PADLOCK WINGS FOR LOCKING VALVE IN CLOSED POSITION.
- CONFORMS TO ANSI/NSF 372 (COMPLIANT WITH US Safe Drinking Water Act. PL 111-380)
- 300 PSI WORKING PRESSURE

Cambridge Brass considers the information in this submittal form to be correct at the time of publication. Item and option availability, including specifications, are subject to change without notice.

Cambridge Brass
 P.O. Box 249, 140 Orion Place
 Cambridge, Ontario
 Canada N1R 5V1
 Tel: (519) 621-5520
 Fax: (519) 621-8674
<http://www.cambridgebrass.com>

C CAMBRIDGE
 BRASS

REV. A - JUNE 2014

SUBMITTED BY: