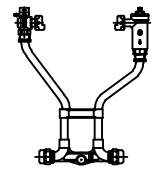


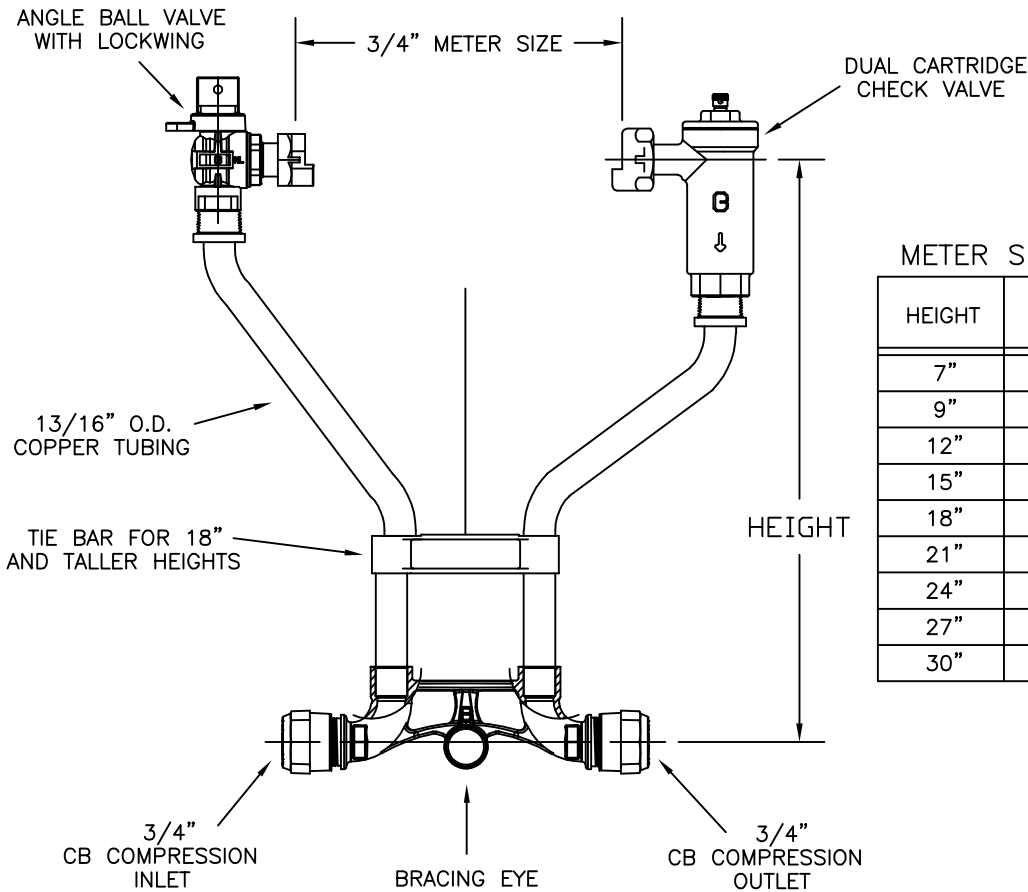
SUBMITTAL INFORMATION

METER SETTER 6020NL-3__H3H3-UQ



NO LEAD 3/4" FULL PORT METER BALL VALVE BY DUAL CARTRIDGE CHECK VALVE

CB COMPRESSION x CB COMPRESSION FOR COPPER OR PLASTIC TUBING (CTS)



METER SETTER CATALOG NUMBERS

HEIGHT	CATALOG NUMBER	APPROX. WT. LBS.
7"	6020NL-307H3H3-UQ	
9"	6020NL-309H3H3-UQ	
12"	6020NL-312H3H3-UQ	
15"	6020NL-315H3H3-UQ	
18"	6020NL-318H3H3-UQ	
21"	6020NL-321H3H3-UQ	
24"	6020NL-324H3H3-UQ	
27"	6020NL-327H3H3-UQ	
30"	6020NL-330H3H3-UQ	

FEATURES

- MANUFACTURED IN COMPLIANCE WITH AWWA STANDARD C800.
- SADDLE NUTS HOLD THE METER IN PLACE FOR TIGHTENING.
- TIE BAR IS STANDARD FOR 18" AND TALLER METER SETTER HEIGHTS.
- 13/16" O.D. COPPER RISERS PROVIDE MORE FLOW CAPACITY.
- ASSEMBLED WITH LEAD-FREE SOLDER.
- BRACING EYE IS STANDARD.

Cambridge Brass considers the information in this submittal form to be correct at the time of publication. Item and option availability, including specifications, are subject to change without notice.

Cambridge Brass
 P.O. Box 249, 140 Orion Place
 Cambridge, Ontario
 Canada N1R 5V1
 Tel: (519) 621-5520
 Fax: (519) 621-8674
<http://www.cambridgebrass.com>



REV. A - JANUARY 2017
 DWG. No. MSUB-67

SUBMITTED BY: