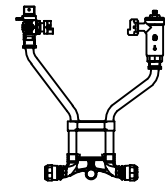


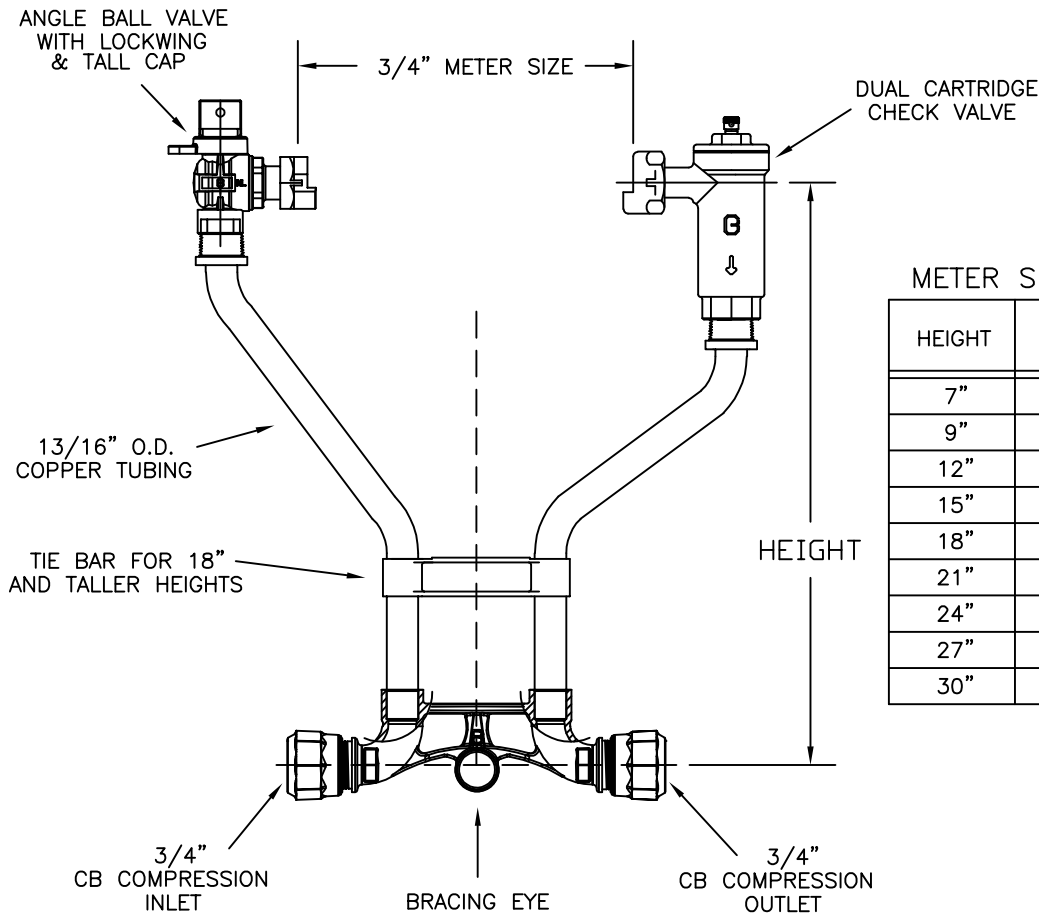
# SUBMITTAL INFORMATION

METER SETTER 6020NL-3\_\_H3H3-UQP



NO LEAD 3/4" FULL PORT METER BALL VALVE BY DUAL CARTRIDGE CHECK VALVE

CB COMPRESSION x CB COMPRESSION FOR COPPER OR PLASTIC TUBING (CTS)



### METER SETTER CATALOG NUMBERS

HEIGHT	CATALOG NUMBER	APPROX. WT. LBS.
7"	6020NL-307H3H3-UQP	
9"	6020NL-309H3H3-UQP	
12"	6020NL-312H3H3-UQP	
15"	6020NL-315H3H3-UQP	
18"	6020NL-318H3H3-UQP	
21"	6020NL-321H3H3-UQP	
24"	6020NL-324H3H3-UQP	
27"	6020NL-327H3H3-UQP	
30"	6020NL-330H3H3-UQP	

#### FEATURES:

- MANUFACTURED IN COMPLIANCE WITH AWWA STANDARD C800 (ASTM B-584, UNS NO C89833).
- CONFORMS TO ANSI/NSF 61-8
- CONFORMS TO ANSI/NSF 372 (COMPLIANT WITH US Safe Drinking Water Act. PL 111-380)
- CONSTRUCTED WITH TYPE K COPPER TUBING, ALLOY C12000 MANUFACTURED TO ASTM B88.
- SADDLE NUTS HOLD THE METER IN PLACE FOR TIGHTENING.
- TIE BAR IS STANDARD FOR 18" AND TALLER METER SETTER HEIGHTS.
- EPDM METER GASKETS PROVIDED
- 13/16" O.D. COPPER RISERS PROVIDE MORE FLOW CAPACITY.
- ANGLE VALVE HAS PADLOCK WINGS FOR LOCKING VALVE IN CLOSED POSITION.
- METER SETTER IS SHIPPED WITH PLASTIC METER IDLER
- ASSEMBLED WITH LEAD-FREE SOLDER.
- 180 DEG. FAHRENHEIT MAXIMUM CONSTANT TEMPERATURE.
- CHECK VALVE IS ASSE 1024 APPROVED
- BRACING EYE IS STANDARD.

Cambridge Brass considers the information in this submittal form to be correct at the time of publication. Item and option availability, including specifications, are subject to change without notice.

Cambridge Brass  
 P.O. Box 249, 140 Orion Place  
 Cambridge, Ontario  
 Canada N1R 5V1  
 Tel: (519) 621-5520  
 Fax: (519) 621-8674  
<http://www.cambridgebrass.com>



REV. A - JANUARY 2017

SUBMITTED BY: