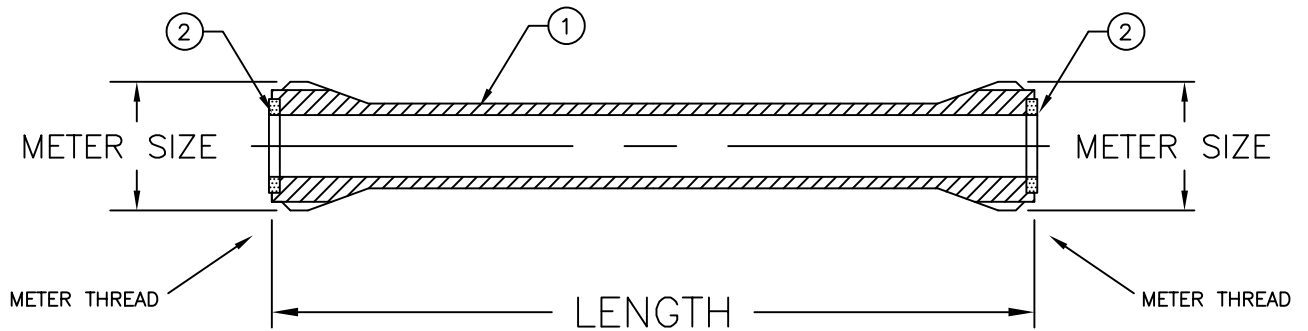
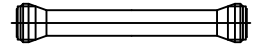


SUBMITTAL INFORMATION

METER IDLERS



5/8" TO 1" METER IDLER CONFIGURATION

PARTS AND MATERIAL:

1. IDLER BAR: PVC
2. GASKET: NEOPRENE

FEATURES:

- MANUFACTURED IN COMPLIANCE WITH AWWA C800-05 (ASTM B-62 AND ASTM B-584, UNS NO C83600-85-5-5-5)
- METER THREADS CONFORM TO AWWA STANDARD C800-05.
- 300 PSI WORKING PRESSURE.

Cambridge Brass considers the information in this submittal form to be correct at the time of publication. Item and option availability, including specifications, are subject to change without notice.

PART NO.	REPLACES METER SIZE	METER THREAD/CONNECTION	LENGTH
450-1	5/8"	3/4-14 NPSM	7.65"
450-2	5/8" x 3/4"	1-11 1/2 NPSM	7.65"
450-3	3/4"	1-11 1/2 NPSM	9.15"
450-4	1"	1 1/4-11 1/2 NPSM	10.90"

Cambridge Brass
 P.O. Box 249, 140 Orion Place
 Cambridge, Ontario
 Canada N1R 5V1
 Tel: (519) 621-5520
 Fax: (519) 621-8674
<http://www.cambridgebrass.com>



SUBMITTED BY: