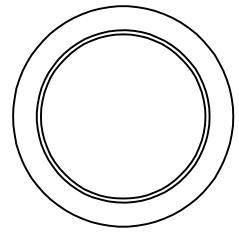
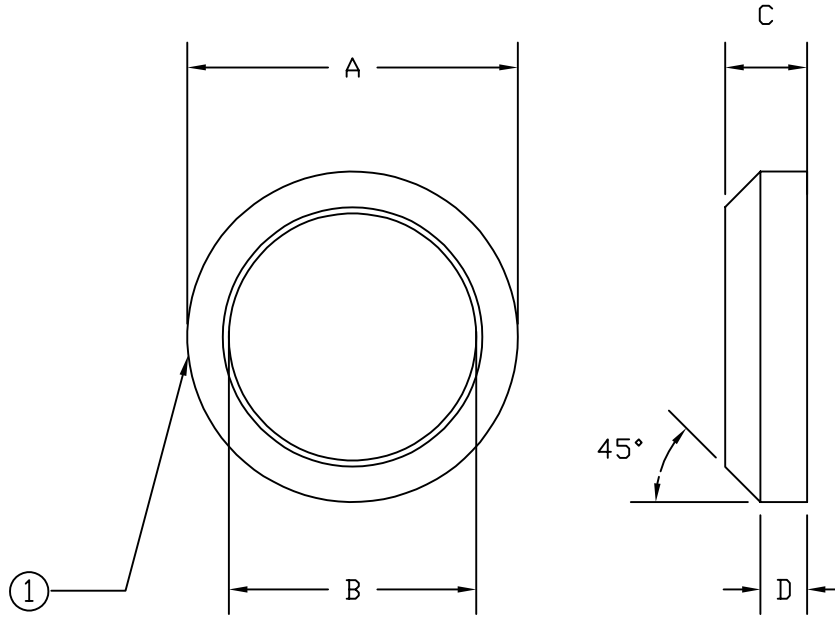


Cambridge Brass  
P.O. Box 249  
140 Orion Place  
Cambridge, Ontario  
Canada N1R 5V1  
Tel: (519) 621-5520  
Fax: (519) 621-8674  
http://www.cambridgebrass.com



MODEL NO. 44

EXPANSION GASKET



PARTS AND MATERIAL:  
1. GASKET: NITRILE RUBBER

- CONFORMS TO AWWA C800 (ASTM B584 UNS C89833 FOR ALL BRASS PARTS IN CONTACT WITH POTABLE WATER)
- CONFORMS TO ANSI/NSF 61-8
- 300PSI WORKING PRESSURE

Cambridge Brass considers the information in this submittal form to be correct at the time of publication. Item and option availability, including specifications, are subject to change without notice.

CATALOG NO.	METER SIZE	A	B	C	D	APPROX. WT. LBS.
44-1	5/8"	1.07"	0.80"	0.27"	0.15"	
44-3	5/8" X 3/4" OR 3/4"	1.30"	0.99"	0.27"	0.15"	
44-4	1"	0.81"	0.645"	0.14"	0.07"	

Submitted by: