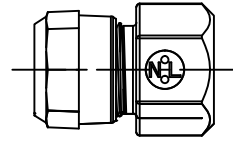


Cambridge Brass
P.O. Box 249
140 Orion Place
Cambridge, Ontario
Canada N1R 5V1
Tel: (519) 621-5520
Fax: (519) 621-8674
http://www.cambridgebrass.com



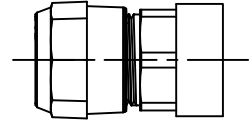
ADAPTER STYLE



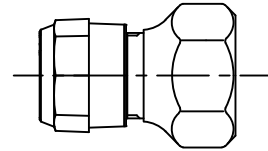
MODEL NO. 119NL

FULL BORE – CB COMPRESSION
X FEMALE COPPER FLARE

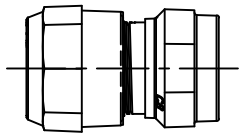
117NL-H2P2/117NL-H3P2



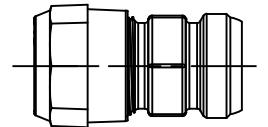
117NL-H3P3



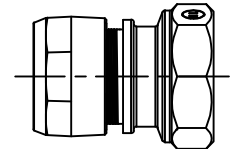
117NL-H3P4



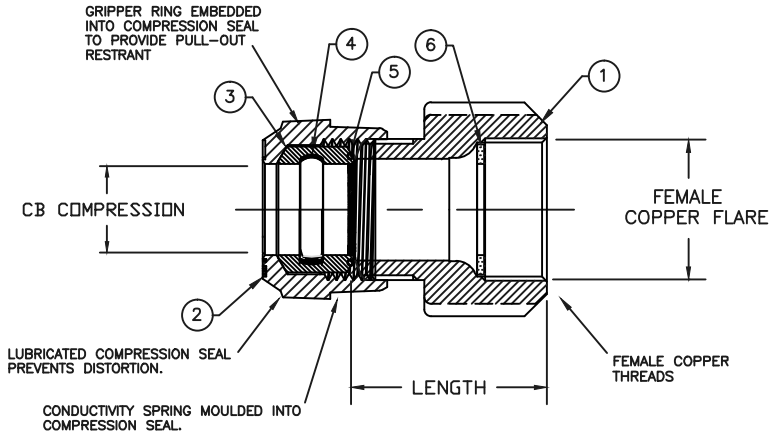
117NL-H4P4



117NL-H4P3



117NL-H6P6/117NL-H7P7



PARTS AND MATERIAL:

1. BODY: CAST BRASS, ALLOY C89833
2. COMPRESSEION NUT: CAST BRASS, ALLOY C83600
3. COMPRESSION SEAL: EPDM
4. GRIPPER: STAINLESS STEEL, ALLOY 302
5. CONDUCTOR SPRING: BRASS
6. SEALING WASHER: COPPER

FEATURES:

- ALL COMPONENTS CONFORM TO AWWA STANDARD C800-05 (ASTM B-584 UNS NO C89833 FOR BRASS PARTS IN CONTACT WITH POTABLE WATER, AND ASTM B-62 AND B-584 UNS NO C83600 FOR ALL OTHER BRASS PARTS).
- CSA CLASSIFIED TO ANSI/NSF STANDARD 61-8.
- 300 PSI WORKING PRESSURE.
- BODY PROVIDES LARGE, RUGGED WRENCH FLATES FOR PROPER INSTALLATION.

Cambridge Brass considers the information in this submittal form to be correct at the time of publication. Item and option availability, including specifications, are subject to change without notice.

| CATALOG NO. | CB COMPRESSION | FEMALE COPPER FLARE | LENGTH | APPROX. WT. LBS. |
|-------------|----------------|---------------------|--------|------------------|
| 119NL-H2P2 | 5/8" | 5/8" | 1.47" | 0.65 |
| 119NL-H3P2 | 3/4" | 5/8" | 1.61" | 0.70 |
| 119NL-H3P3 | 3/4" | 3/4" | 1.79" | 0.70 |
| 119NL-H3P4 | 3/4" | 1" | 2.00" | 0.87 |
| 119NL-H4P3 | 1" | 3/4" | 2.29" | 1.20 |
| 119NL-H4P4 | 1" | 1" | 2.03" | 1.25 |
| 119NL-H6P6 | 1 1/2" | 1 1/2" | 2.79" | 3.20 |
| 119NL-H7P7 | 2" | 2" | 3.19" | 4.25 |

Submitted by: