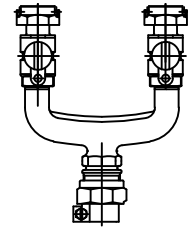


Cambridge Brass
P.O. Box 249
140 Orion Place
Cambridge, Ontario
Canada N1R 5V1
Tel: (519) 621-5520
Fax: (519) 621-8674
http://www.cambridgebrass.com

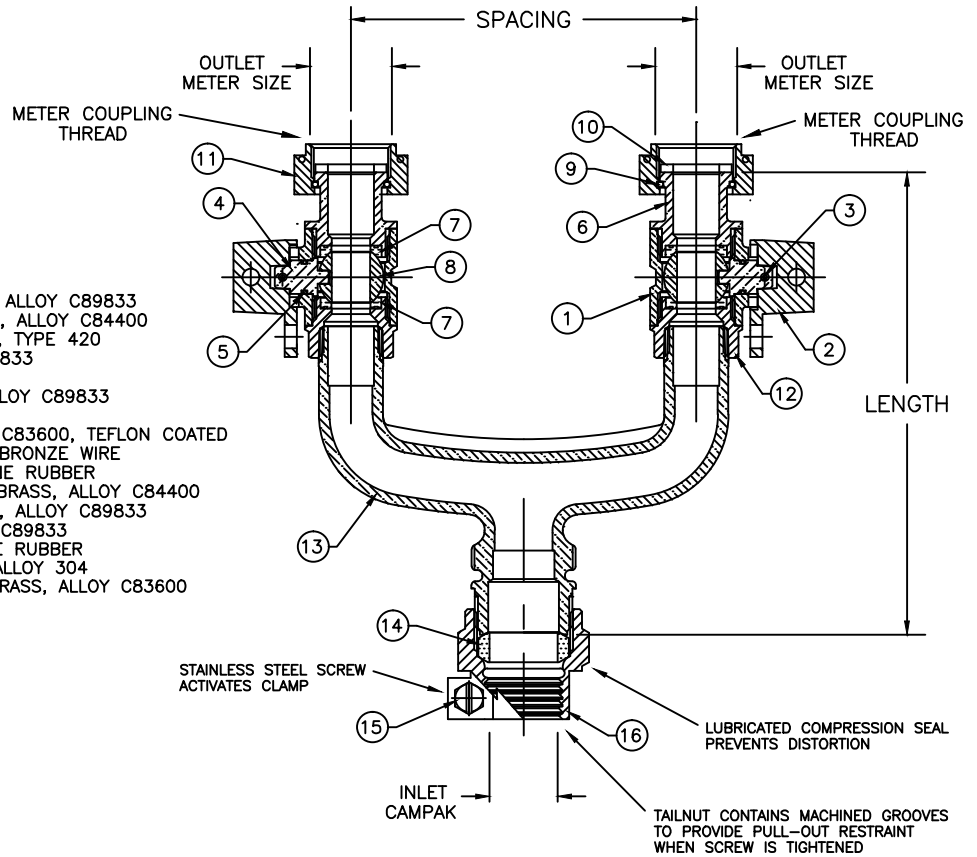


MODEL NO. 274NL

CAMPAK x METER SWIVEL NUT

DOUBLE CURB
REDUCED PORT

FOR COPPER OR PLASTIC TUBING (CTS) x METER SPUD



PARTS AND MATERIAL:

1. VALVE BODY: CAST BRASS, ALLOY C89833
2. LOCKING CAP: CAST BRASS, ALLOY C84400
3. CAP PIN: STAINLESS STEEL, TYPE 420
4. STEM: COPPER, ALLOY C89833
5. O-RING: NITRILE RUBBER
6. ENDBODY: CAST BRASS, ALLOY C89833
7. SEATS: NITRILE RUBBER
8. BALL: CAST BRASS, ALLOY C83600, TEFLON COATED
9. RETAINER RING: PHOSPOR BRONZE WIRE
10. SEALING WASHER: NEOPRENE RUBBER
11. METER SWIVEL NUT: CAST BRASS, ALLOY C84400
12. FIP ENDBODY: CAST BRASS, ALLOY C89833
13. BODY: CAST BRASS, ALLOY C89833
14. COMPRESSION SEAL: NITRILE RUBBER
15. SCREW: STAINLESS STEEL, ALLOY 304
16. COMPRESSION NUT: CAST BRASS, ALLOY C83600

FEATURES:

- MANUFACTURED IN COMPLIANCE WITH AWWA STANDARD C800.
- PADLOCK WING FOR LOCKING VALVES IN CLOSED POSITION.
- METER GASKETS PROVIDED.
- METER THREADS COMFORM TO AWWA C700.
- CONFORMS TO ANSI/NSF 61-8
- CONFORMS TO ANSI/NSF 372 (COMPLIANT WITH US Safe Drinking Water Act. PL 111-380)
- 300 PSI WORKING PRESSURE

ORDERING INFORMATION:

FULL 360 ROTATION = ADD "R" TO END OF CATALOG NO.
HANDLE = ADD "H" TO END OF CATALOG NO.

Cambridge Brass considers the information in this submittal form to be correct at the time of publication. Item and option availability, including specifications, are subject to change without notice.

CATALOG NO.	INLET CAMPAK	OUTLET METER SIZE	SPACING	LENGTH	APPROX. WT. LBS.
274NL-B4T3	1"	5/8"x3/4" & 3/4"	5.62"	7.75"	
274NL-B4T36500	1"	5/8"x3/4" & 3/4"	6.50"	6.64"	
274NL-B4T37500	1"	5/8"x3/4" & 3/4"	7.50"	6.69"	

Submitted by: