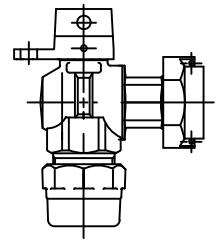


Cambridge Brass
P.O. Box 249
140 Orion Place
Cambridge, Ontario
Canada N1R 5V1
Tel: (519) 621-5520
Fax: (519) 621-8674
http://www.cambridgebrass.com

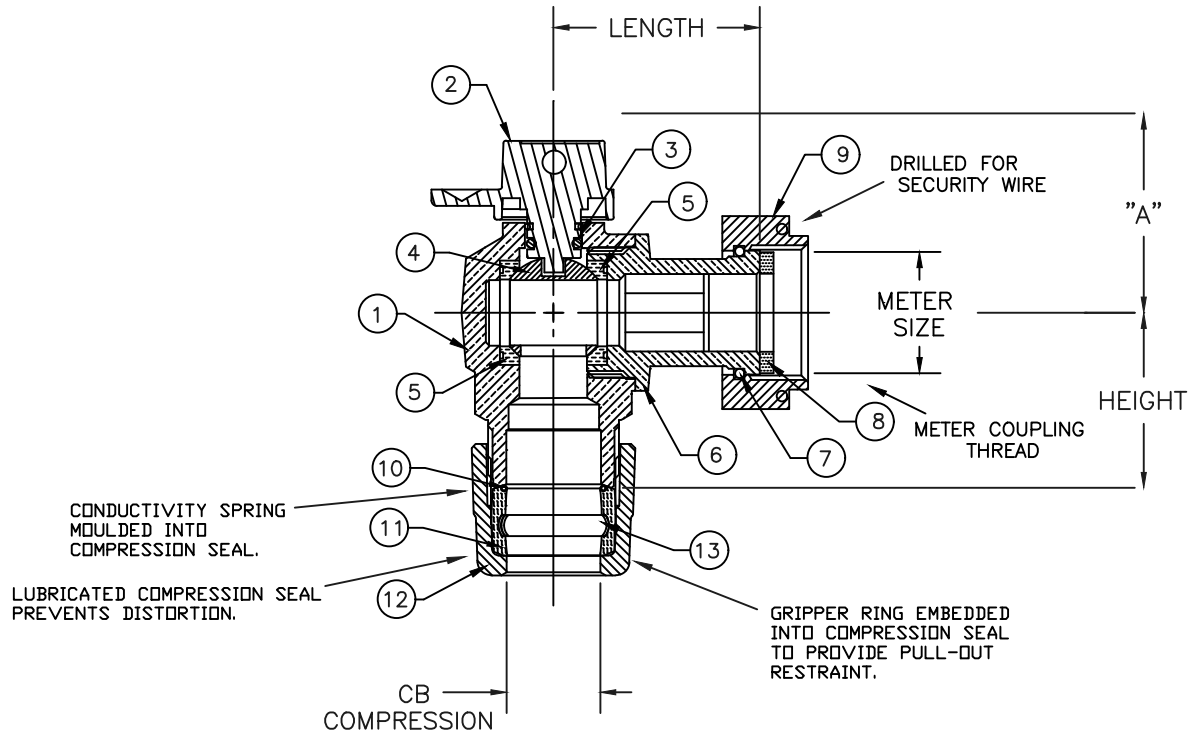


MODEL NO. 214NL

CB COMPRESSION x METER SWIVEL NUT

ANGLE METER STOP – BALL STYLE
REDUCED PORT WITH LOCKWING

FOR COPPER OR PLASTIC TUBING (CTS) x METER SPUD



PARTS AND MATERIAL:

1. VALVE BODY: NO LEAD CAST BRASS, ALLOY C89833
2. LOCKING CAP: NO LEAD CAST BRASS, ALLOY C89833
3. O-RING: NITRILE RUBBER
4. BALL: CAST BRASS ALLOY C89833, TEFLON COATED
5. SEATS: NITRILE RUBBER
6. ENDBODY: NO LEAD CAST BRASS ALLOY C89833
7. RETAINER RING: PHOSPOR BRONZE WIRE
8. SEALING WASHER: EPDM RUBBER
9. METER SWIVEL NUT: CAST BRASS, ALLOY C83600
10. CONDUCTOR SPRING: BRASS
11. COMPRESSION SEAL: EPDM
12. COMPRESSION NUT: CAST BRASS, ALLOY C83600
13. GRIPPER: STAINLESS STEEL, TYPE 302

FEATURES:

- MANUFACTURED IN COMPLIANCE WITH AWWA STANDARD C800 (ASTM B-584 UNS NO C89833 FOR BRASS PARTS IN CONTACT WITH POTABLE WATER, AND ASTM B-62 AND B-584 UNS NO C83600 FOR ALL OTHER BRASS PARTS).
- CONFORMS TO ANSI/NSF 61-8
- CONFORMS TO ANSI/NSF 372 (COMPLIANT WITH US Safe Drinking Water Act. PL 111-380)
- FLOW CAN BE IN EITHER DIRECTION.
- BLOWOUT PROOF DESIGN.
- 300 PSI WORKING PRESSURE.
- HOLE FOR ATTACHING HANDLE IS PROVIDED IN CAP.
- PADLOCK WING FOR LOCKING VALVE IN CLOSED POSITION.
- METER THREAD COMFORMS TO AWWA C700.

PARTS AND MATERIAL (HANDLE OPTION):

14. HANDLE: CAST BRASS, ALLOY C84400
15. SLOTTED SPRING PIN: STAINLESS STEEL AISI 420

ORDERING INFORMATION:

FULL 360 ROTATION = ADD "R" TO END OF CATALOG NO.
HANDLE = ADD "H" TO END OF CATALOG NO.

Cambridge Brass considers the information in this submittal form to be correct at the time of publication. Item and option availability, including specifications, are subject to change without notice.

VALVE SIZE	CATALOG NO.	CB COMP.	METER SIZE	HEIGHT	LENGTH	"A"	APPROX. WT. LBS.
5/8"	214NL-H3T3	3/4"	5/8" x 3/4" OR 3/4"	1.68"	1.97"	1.93"	

Submitted by: