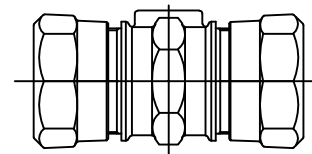


Cambridge Brass
P.O. Box 249
140 Orion Place
Cambridge, Ontario
Canada N1R 5V1
Tel: (519) 621-5520
Fax: (519) 621-8674
http://www.cambridgebrass.com

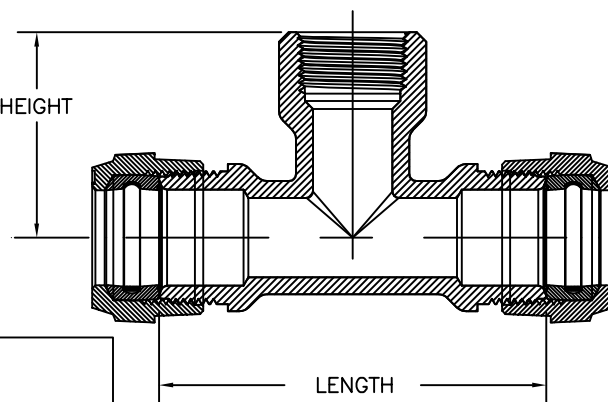
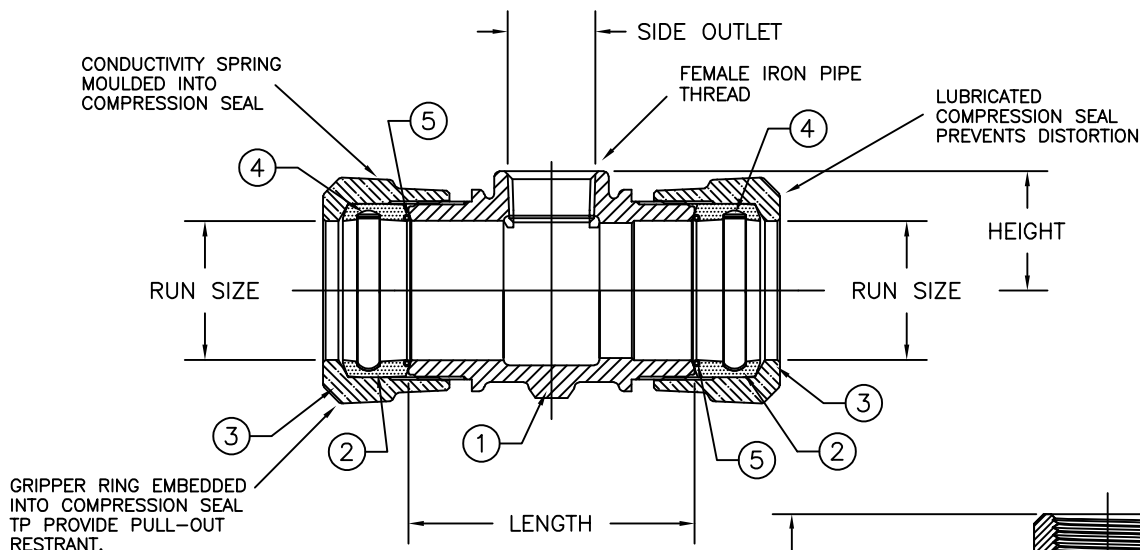


MODEL NO. 151NL

CB COMPRESSION x CB COMPRESSION
x FEMALE IRON PIPE

SERVICE TEE

FOR COPPER OR PLASTIC (CTS) TUBING BY THREADED PIPE OUTLET



151NL-H3F3
151NL-H4F4

PARTS AND MATERIAL:

1. TEE BODY: CAST BRASS, ALLOY C89833
2. COMPRESSION SEAL: EPDM
3. COMPRESSION NUT: CAST BRASS, ALLOY C83600
4. GRIPPER: STAINLESS STEEL, ALLOY 302
5. CONDUCTOR SPRING: BRASS

FEATURES:

- MANUFACTURED IN COMPLIANCE WITH AWWA STANDARD C800 (ASTM B-62 AND ASTM B-584, UNS NO C83600-85-5-5-5).
- 300PSI WORKING PRESSURE
- NO LEAD PARTS CONFORM TO ANSI/NSF 61-8
- NO LEAD PARTS CONFORM TO ANSI/NSF 372 (COMPLIANT WITH US Safe Drinking Water Act. PL 111-380)

Cambridge Brass considers the information in this submittal form to be correct at the time of publication. Item and option availability, including specifications, are subject to change without notice.

TEE SIZE	CATALOG No.	RUN SIZE CAMPAK	SIDE OUTLET F.I.P.	LENGTH	HEIGHT	APPROX. WT. LBS.
3/4" x 3/4"	151NL-B3F3	3/4"	3/4"	3.66"	1.94"	1.3
1" x 1"	151NL-B4F4	1"	1"	4.20"	2.10"	2.4
1 1/2" x 3/4"	151NL-H6F3	1 1/2"	3/4"	3.40"	1.42"	3.3
2" x 3/4"	151NL-H7F3	2"	3/4"	4.16"	1.60"	4.6
2" x 1"	151NL-H7F4	2"	1"	4.16"	1.60"	6.0

Submitted by: